

HOW MANY NEW WORDS CAN YOU MAKE FROM
SWIMMING IN THE SEA? WRITE THEM IN HERE:

SEASIDE

HOW MANY ANIMALS?
JUST CIRCLE THE RIGHT ANSWER



1 2 3



6 7 8



4 5 6



10 11 12

WHICH PROVINCES DO THESE
COUNTIES BELONG TO?

KERRY
DUBLIN
DONEGAL
MAYO

Q. WHERE DO
FISH KEEP
THEIR MONEY?
A. IN THE
RIVER BANK

$$15 + 23 = \rule{1cm}{0.4pt}$$

$$12 \times 4 = \rule{1cm}{0.4pt}$$

$$27 - 11 = \rule{1cm}{0.4pt}$$

$$16 + 9 = \rule{1cm}{0.4pt}$$

$$7 \times 8 = \rule{1cm}{0.4pt}$$

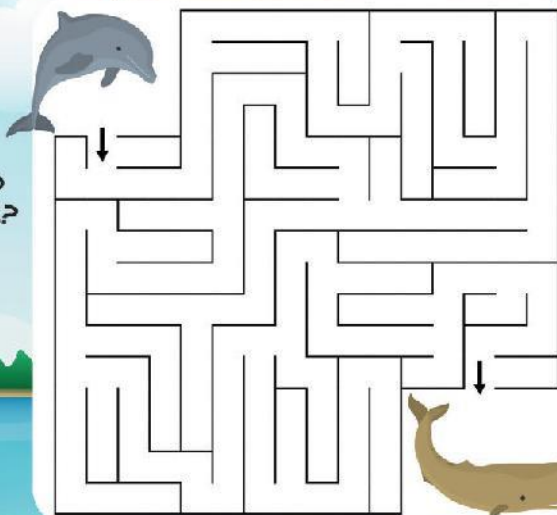
$$14 \div 2 = \rule{1cm}{0.4pt}$$

$$24 \times 2 = \rule{1cm}{0.4pt}$$

CAN YOU GET
ALL THESE SUMS
RIGHT?



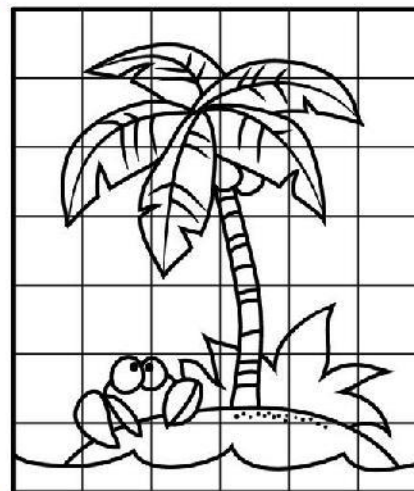
CAN YOU
HELP THE
DOLPHIN
FIND HIS
WAY TO
HIS FRIEND
THE WHALE?



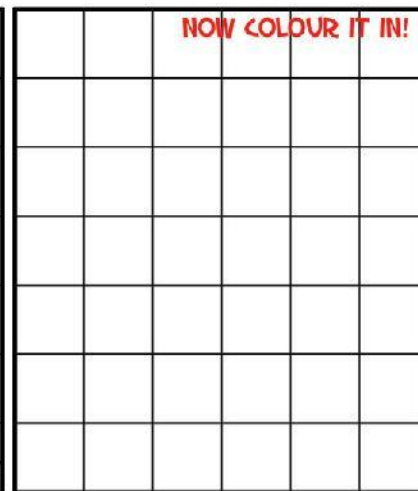
FIND SEVEN DIFFERENCES
BETWEEN THE PICTURES
BELOW



COPY THE PICTURE BELOW INTO THE BOX BESIDE IT



NOW COLOUR IT IN!



BIZZI PAD

maldron HOTELS

www.maldronhotels.com

THE MIXED UP WORDS ARE ALL TYPES
OF SEA CREATURES. UNSCRAMBLE THE
LETTERS AND WRITE THEM ON
THE LINES PROVIDED



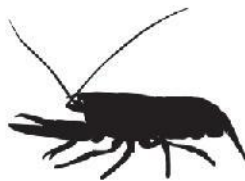
ARBC



NIPLDOH

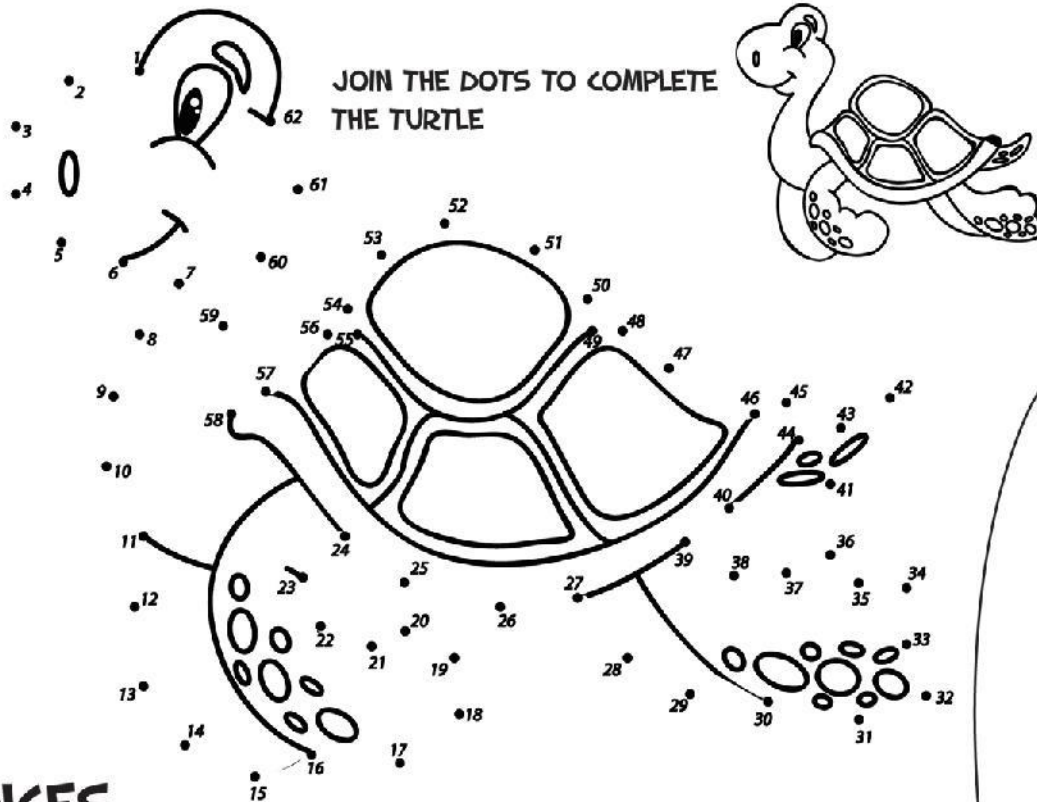


AKSRH

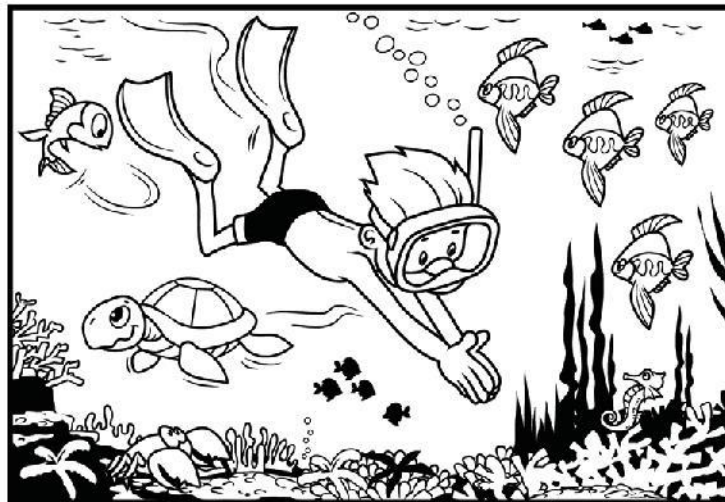
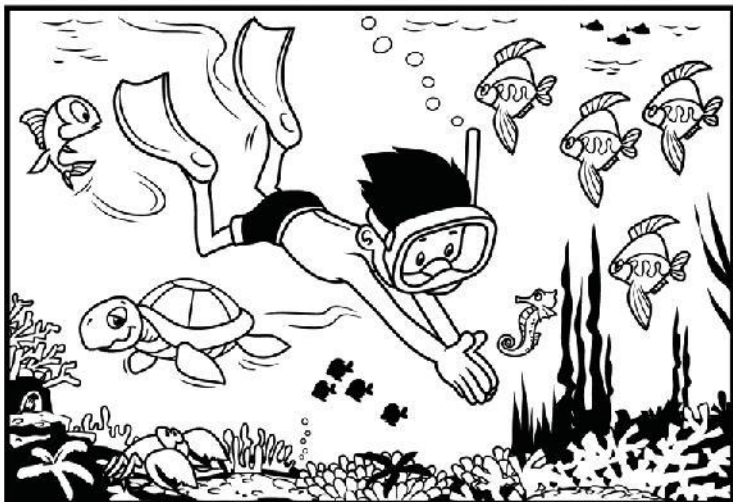


SRBOLET

SEASIDE



SPOT THE 10 DIFFERENCES



DOODLE SPACE